

Warranty Information

Proof of purchase will be required.

The guarantee does not cover faults or damage caused by incorrect installation and/or maintenance, ordinary wear and tear, water composition, etc.

*Please see www.deva-uk.com for full terms and conditions of warranty

Cleaning

Your product has a high-quality finish and should be treated with care to preserve the visible surfaces. Never use abrasives or abrasive cleaning agents to clean this product clean regularly with contamination free warm water and a damp soft cloth. Do not use products containing chlorine bleach or hydrochloric acid as these can damage the product.

We have a policy of continuous improvement and reserve the right to change specifications without notice.

METHVEN UK LIMITED
METHVEN EXPERIENCE CENTRE
3/3A STONE CROSS COURT
YEW TREE WAY
GOLBORNE

WARRINGTON
WA3 3JD
UNITED KINGDOM

INST-MOS1o8
V1 20.02.2024

TEL: 0800 195 1602
FAX: 0844 406 8690
EMAIL: sales@uk.methven.com
www.deva-uk.com
www.methven.com

Moselle Bath Filler

Chrome

MOS1o8

Installation Guide

Technical Specification

Working Pressure:

Min: 0.2 Bar

Max: 5.0 Bar

Operating Temperature:

Hot: 65°C

Cold: 5°C

Inlet Connections:

3/4" BSP

Features:

- Suitable for high & low pressure systems
- 1/4 turn ceramic disc
- H & C temperature indicator
- Tap Height 144mm,
- Spout Height 88.5mm
- Spout Reach 120.5mm
- Brass backnuts



Please keep these instructions for future reference and request of replacement parts

Contents

General Safety Information	3
Line Drawing	3
Product Breakdown	4
Product Breakdown	4
Installation Requirements	6
Installation	6
Troubleshooting	7
Warranty Information	8
Cleaning	8

Troubleshooting

Symptom	Cause(s)	Resolution
Mixer not turning on	Mains water supply turned off	Turn on the mains water supply
	Closed isolation valve	Open isolation valve
No hot water	Cold override	Check if the pressure is balanced. Fit pressure equalising valve.
Low flow rate/no flow	Water supply failure	Investigate water supply, check plumbing and heating system for any faults
	Partially closed isolation valve	Open isolation valve
	Air lock or partial blockage in the supply pipework or hoses	Flush through pipework to ensure removal of debris and any airlocks
	Water being drawn off elsewhere causing pressure changes or instantaneous boiler temperature changes. Ensure minimum pressure is being met.	Try not to use other water outlets when using the mixer
Water dripping from the mixer	This is normal for a short time after using the mixer	This is due to residual water tension, the build up of water in the mixer spout.
	If water continues to drip, possible issue with the flow control cartridge.	Please contact our customer care team
Movement of fitted mixer	Back nuts loose	Ensure Back nuts are sufficiently tightened
	Extra support may be required depending on the surface the tap is fitted to.	Please contact customer care to purchase top hat washers.

Installation Requirements

Before commencing installation of the new product, ensure that the system has been flushed to remove any debris, which could cause damage to the valves and invalidate the warranty.

Installation

1, Remove the metal back nuts (13) and back nut washer (12) from the 3/4" BSP Threaded Connection (11).

2, Push the mixer threaded connection (11) through the holes in the bath, ensuring that the base plates (8) are correctly positioned, fully covering the mounting holes.

3, Place the back nut washer (12) and back nuts (13) back onto the threaded connection (11), under the bath, and screw up until the tap is secured in position (do not overtighten). Please note additional sealant can be used if required.

4, Connect the water supply pipes to the threaded connection and tighten, an adequate sealing method should be used to create a water tight seal.

5, Reinstall the water supply and test for leaks.

General Safety Information

Please read all of the instructions before installation.

Methven recommends this product is installed by a competent person in compliance with all relevant regional regulations.

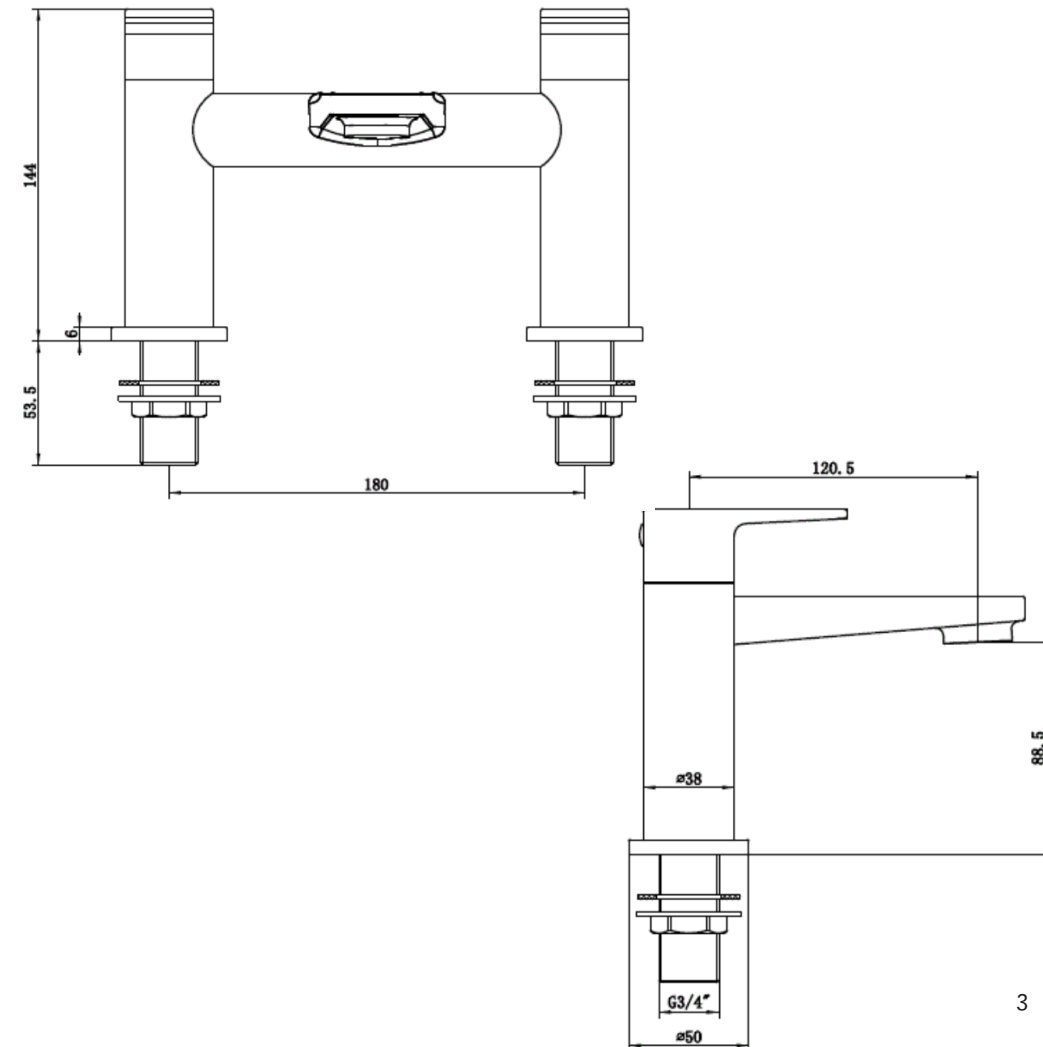
Remove all packaging and check the components for damage before starting installation.

This product **must** not be modified in any way as this will invalidate the guarantee.

It is the responsibility of the installer to ensure a waterproof seal is achieved, after installation all connections must be checked for leaks.

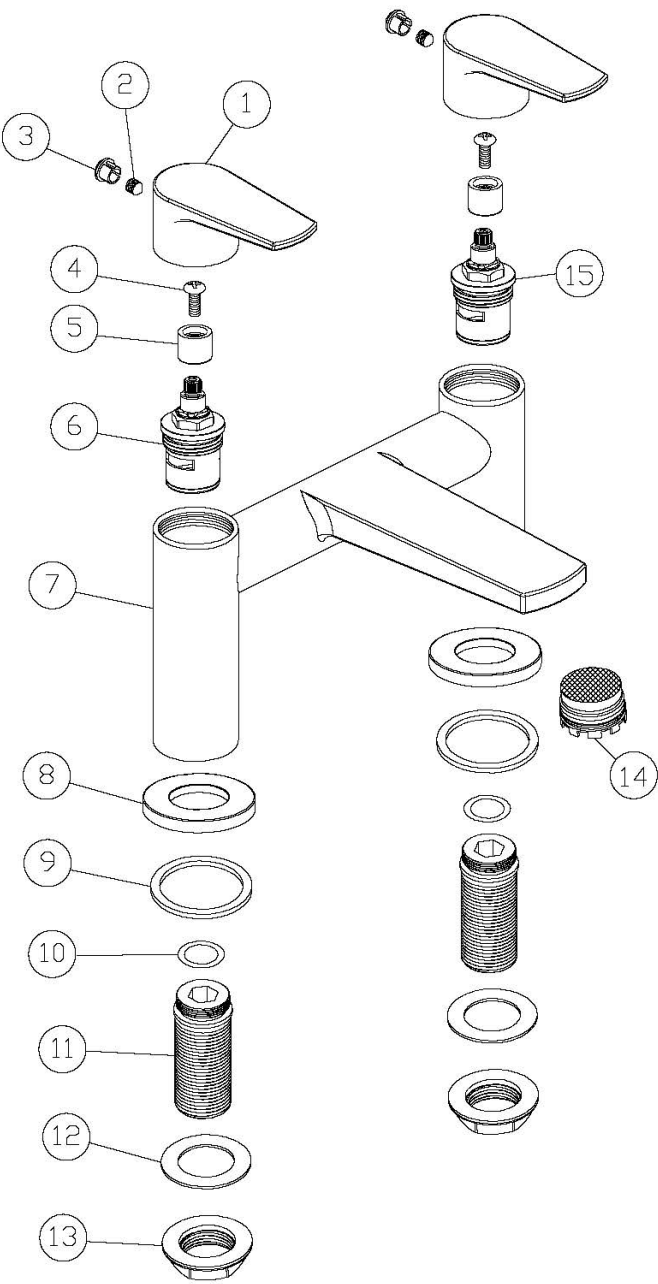
All outlets used primarily for personal hygiene shall deliver water at a safe temperature as per regional regulations.

Line Drawing



Product Breakdown

Check All components are present prior to starting installation.



Item Number	Item Description
1	Handle
2	Grub Screw
3	Grub Screw Cap
4	Screw
5	Handle Insert
6	¼ Turn Ceramic Disc - Hot
7	Bath Filler Body
8	Base Plate
9	Base Plate Washer
10	O-Ring
11	¾" BSP Threaded Connection
12	Backnut Washer
13	Backnut Metal
14	Aerator
15	¼ Turn Ceramic Disc - Cold